

COURSE PROSPECTUS

EQUINE & CANINE COURSES



PROFESSIONAL CAREER COURSES

OWNERS COURSES

CPD – FOR PROFESSIONALS



THANK YOU FOR SHOWING YOUR INTEREST IN EQUI-ED. IRELAND'S LEADING EDUCATOR IN ALL THINGS EQUINE & CANINE.

We support our graduates with ongoing continuing professional development courses in associated complementary and alternative therapy modalities, providing a knowledge base unique in the equine and canine training sphere.

Why choose Equi-Ed?

Equi-Ed has produced a range of innovative and flexible Equine & Canine study programmes underpinned by experience of working with a wide range of horses & dogs from all disciplines on a local, national and international platform. We teach 'real life' scenarios that you will encounter in your industry. Our 'best practice' model ensures that you can develop your work in clinical practice for maximum benefit to the horse and rider.

Industry links

Equi-Ed has excellent links with business and organisations, many of which work with our graduates.

Practice makes perfect

If you like hands on practical work then our courses and the careers they lead to are perfect for you. Relevant real life practical experience is part of all our courses.

Financial support

With competitive fees and grant support for anyone working within the racehorse industry you will find that studying with Equi-Ed is not as expensive as you thought. We offer a range of payment options as we will work with every individual need.

Individual status

Every single student with Equi-Ed is treated as an individual, staff are friendly approachable and always available to offer support and advice.

+353 (0) 897013884

info@equied.com

Equi-Ed

equieded

equiededucation

equied.com

CONTENTS

CAREER PROFILES	4
PROFESSIONAL CAREER COURSES	
Advanced Practitioner in Equine Integrative Support Therapies	13
Equine Health & Nutrition Management	14
Applied Racehorse Support Therapy	15
Equine Bit & Bridle Fitting Consultant	16
Practitioner In Canine Therapy	17
OWNER & CPD COURSES	
Equine Massage for Horse Owners	20
Equine Nutrition for Horse owners	21
Optimum Management for Traveling Horses. Certificate of Competency	21
Equine Emergency First Aid	22
Colic & Gut Health. Prevention & Management	23
Equine Bio-security Best Practice Protocols	23
Training Horses From An Anatomical Perspective	24
Advanced Myofascial Release & Kinetic Chains	25
Equine Spinal Freedom Mobilisation Techniques	26
Horse Bit & Bridle Assessment for Equine Professionals	27
Equine Manual Lymphatic Drainage	27
Advanced Assessment & Prescription for Performance & Rehabilitation	28
Holistic Therapy for all Breeding Stock	29
Equine Water Treadmill Training	30
Equine Conformation, Biomechanics & Beyond	31
Equine Lameness – The full Extent	32
Equine Cranio-Sacral Therapy	33
Vetkin Equine Kinesiology Taping	34
Dissection – Forelimb & Hind-limb	35
Equine Dissection with Becks Nairns	36
CANINE COURSES	
Canine First Aid & CPR	39
Canine Massage For Dog Owners	40
Canine Kinesiology Taping	41
COURSE LISTINGS	42
ADMISSIONS POLICY	45



career profiles

Upon completion of our training programmes, graduates are equipped to launch successful careers as equine or canine massage therapists. With the knowledge and skills to improve horse welfare and performance, our graduates find employment opportunities in various settings, including:

- Private practices serving a range of horse owners and trainers
- Clinics catering to performance sports horses
- Equine rehabilitation specializing in injury recovery
- Racehorse industry



Elayne Coulston

EQUINE PHYSICAL THERAPIST

I studied for Equine Integrative Support Therapies Certification and after completing my course work and exam received my qualification in March 2021. I found the course harder work than I had anticipated but also came away with a much more rounded education than just equine massage.

Thanks to units of conformation, nutrition, dentition, cognition and rider biomechanics, I feel confident looking at horses in a holistic way and being able to treat not just the problem but also getting to the root cause of what is causing the issue.

The course included on site learning days which are a great way to learn and practice hands on techniques and also discuss specific issues that I had either encountered historically or was seeing in case studies as well as distance learning which encourages further research and knowledge expansion. Through both my assignments and case studies I had the confidence to hit the ground running after completing the course and set up my own business as an Equine Physical Therapist.

Having found the Equine Certification to be so useful and informative I subsequently completed the Canine Massage and Rehabilitation which enabled me to add dogs to my client list.

What services you provide?

Since qualifying with Equi-Ed I have begun my own business as an Equine and Canine Physical Therapist and thanks to completing some highly useful CPD's I offer the following to horse and dog owners:

Equine and Canine massage and joint mobilisation including, sports massage, pre and post competition massage, therapeutic massage, deep tissue release, trigger point therapy and passive stretching. The more advanced and specialised techniques of advanced equine myofascial release and lymphatic drainage. In addition I have completed the following CPD's which are invaluable to increasing my effectiveness when treating animals:

- Equine Health & Nutrition
- Equine & Canine Kinesiology Taping
- Photizo Red Light Application
- Saddle and Bridle Assessment
- Equine & Canine First Aid
- Advanced Myofascial Release & Kinetic Chains
- Equine Craniosacral Therapy
- Advanced Assessment & Prescription for Performance & Rehabilitation
- Equine Water Treadmill Training
- Equine Manual Lymphatic drainage
- Introduction to Canine Hydrotherapy
- Myofascial Pain and Dysfunction in Dogs

What course did you study?
Equine Integrative Support Therapies Certification

What area do you cover?
I cover Kildare and surrounding counties with clients in Wicklow, Dublin, Meath and Offaly. I travel to further locations for a number of clients in a condensed location.

Additionally, I am now involved in teaching and organising owner workshops, professional courses and CPD's for Equi-Ed. One of the high-points of 2023 was being involved in the organisation of and the attendance at Ireland's first whole horse dissection which was an invaluable learning experience.





Aoife Glynn

EQUINE HEALTH & NUTRITION MANAGEMENT

I had the Fantastic opportunity to study Equine Health & Nutrition management with Equi-Ed. I gained a wealth of knowledge from the course including an in depth view of the gastrointestinal anatomy of the horse & their nutritional requirements.

Equi-Ed provides both practical and theory lessons within their courses which in my opinion is essential for this industry, being hands on with the horses is a huge advantage for any student! I found the course very engaging, informative and challenging.

Studying Equine Health & Nutrition Management with Equi-Ed has enabled me to follow my dreams to work within a sector of the equestrian industry i have been passionate about for many years & I am now a qualified Equine Nutritional Advisor.

I now have my own independent Equine Nutritional advisory business "AMG Equine" based in East Co. Galway.

I'm delighted to be able cover Connaught, Leinster & Munster areas and offer my services to horse and pony owners, riding clubs, pony clubs & livery yards. I own a portable equine weigh bridge & provide body condition scoring, weight management plans & tailored nutrition plans for all horses and ponies and aim to provide my clients with unbiased advise on equine feeds and supplements.



What course did you study?

Equine Health & Nutrition Management



What area do you cover?

I cover Kildare and surrounding counties with clients in Wicklow, Dublin, Meath and Offaly and am happy to travel to further locations for a number of clients in a condensed location.

Jason Deer

RACEHORSE SPECIFIC INTEGRATED SUPPORT THERAPY

I aim to promote equine massage therapies as an integral part of all horse training programs. Improving their performance, recovery and ultimately enhancing their health and wellbeing.

I am currently working for leading national hunt trainer Willie Mullins. With this, I get to treat top class horses on a daily basis which is incredibly rewarding helping them perform at the highest level in racing. I also do treatments for numerous other trainers and enjoy treating both eventers and show jumpers as I compete myself regularly and understand the performance needed for horses to be competitive in the sport.

What did you study with Equi-Ed?

I have been working with racehorses for the past 10 years and had been looking for additional courses to complete within the industry. I found the Equi Ed course online and following a call with Therese, I decided to complete Racehorse specific Integrated support Therapy. The blend of course content and hands-on experience suited me while I continued to work full time.

The quantity of work and commitment needed from the student is a very high standard, however the help from Therese and her team was greatly appreciated in achieving this to a professional level. On completion of the course, I was very confident in my ability to help and make an impact in the industry as a whole.



What course did you study?

Racehorse specific Integrated support Therapy



What area do you cover?

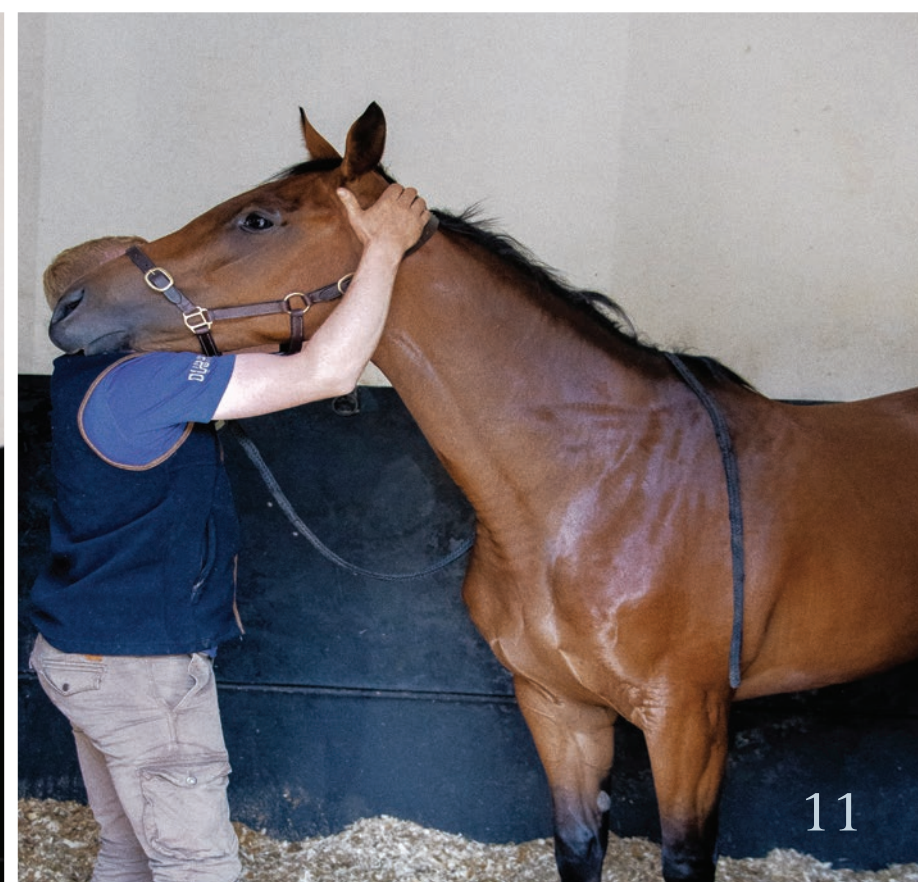
Carlow, Dublin, Kildare, Kilkenny, Laois, Wexford and Wicklow. I will travel further for multiple treatments.

What services you provide?

I perform private treatments for clients within the racehorse, eventing and show jumping industries ranging from lead rein ponies to grade/group 1 horses. I aim to work with and advise the client on how these therapies can compliment their desired discipline. This includes:

- Sports Massage
- Deep Tissues Muscle Release
- Myofascial Release
- Trigger Point Therapy
- Joint Mobilisation
- Full passive stretch routines
- Kinesio Taping
- Visual assessment
- Core strength and stability programs for racehorses

Additionally, I offer in-house rehabilitation programs for horses in my purpose-built yard in Co. Carlow. These programs are delivered collaboratively with veterinary and owner requirements tailored to each horse's individual need.



Equi-Ed professional courses

Our instructors have extensive experience in equine massage and rehabilitation, ensuring students receive the most practical and effective training.

Our programmes emphasize hands-on learning, allowing students to apply their knowledge and develop their massage techniques in realistic scenarios.

As an equine or canine massage therapist, you'll embark on a journey of transformation, not only for the animals you serve but also for yourself. You'll develop a deeper understanding of equine behavior and physiology, while honing your ability to provide compassionate and effective care.

Apply for professional courses online www.equied.com

ADVANCED PRACTITIONER EQUINE INTEGRATIVE SUPPORT THERAPIES

LEVEL 5

Therapy plays a vital role in the maintenance of all horses. A Therapist usually works on a self-employed basis and provides treatments on horses at regular intervals to ensure the horse's musculoskeletal system is healthy and maintained sufficiently for the work expected of it with a focus on reducing injury and enhancing performance.



Overview of the course

All horses are candidates for physical therapy: a retired horse with aching joints and muscles, a leisure horse, a competition horse or a horse in rehabilitation - they will all need a specific therapy approach.

Is this course for you?

If you are passionate about a career in Equine Therapy with everything you need to be successful and well respected then this is the training programme for you. UK Rural Skills accredited, align to level 5, (6 Irish Framework) aimed at the higher education student.

The unique integrated programme produces equine professionals with excellent therapeutic practical skills and rehabilitation strategies to implement based on in-depth assessment of the horse and academic knowledge learned.

There is a growing demand for 'high quality and caring' professionals in the equine complimentary healthcare sector. We meet this at Equi-Ed, every horse is treated as an individual – we don't just teach you to massage a horse – every horse is different and requires a tailored approach and there is much more to therapy than massage alone.

Train with our therapists

Our Therapists are second to none with the skills and knowledge to help leisure and performance horses of all disciplines to perform, recover better whilst enhancing their health and wellbeing.

An immense range of musculoskeletal practical skills for you to apply, such as: sports massage, deep tissue muscle release, myofascial release, trigger point therapy, joint mobilisation, equine manual lymphatic drainage and more!

Our training principles are based on objective, evidence based research and a thorough understanding of the horse - with a keen interest in injury prevention.

The physical and emotional structure of the horse include its anatomy & physiology, behaviour and psychology, other important systems such as the foot and dentition, supplementary subjects of horse and rider anatomical relationship, suitability of tack and training aids and much more make for an "all-encompassing programme of study". We even have a unit dedicated to building a successful business and the legalities involved with this including working with other professionals and within the Veterinary Act.

Final Assessment & Certification = €200 *Monthly Payment Plans are available.

Course Advanced Practitioner Equine Integrative Support Therapies

Course Certification UK Rural Skills accredited, align to level 5

Duration **14 months.** The course is run in 2 Modules. Module one comprises of online lectures and on-site days followed by distance learning where case studies and assignments are required. Mod 2 is run the same way 6 months later.

Online or On-site Online and On Location Ireland, Scotland, Canada & New Zealand

EQUINE HEALTH & NUTRITION MANAGEMENT

LEVEL 5

Would you like to become an Equine Nutrition Advisor and offer an additional service alongside your therapy; or work independently with equine nutrition? If so, this unique level 5 training programme produces self-employed Equine Nutrition Advisors with an in-depth specialist understanding of the wellbeing of the horse through study of the principles underpinning equine health and nutritional management.

Overview of the course

This unique level 5 training programme provides an in-depth specialist understanding of the well-being of the horse through study of the principles underpinning equine health and nutritional management.

This programme seeks to provide a stimulating and challenging experience for students wishing to gain scientific knowledge in order to promote the health, welfare and optimise nutrition of the equine athlete. There is a specific unit dedicated to racehorse nutrition for those who wish to focus on the racing industry and one for the broodmare and foal.

A fully flexible training course combining attended learning and distance learning with the completion of assignments. For those who wish to progress to level 6 status, there is the opportunity to do so through additional completion of nutrition case studies on horses.



Training deliverables

Equi-Ed has designed a flexible study programme to suit all student profiles, whether studying already or in employment. The programme is delivered in one attended learning which incorporates 4 days of 'Attended Learning' where we focus on theory followed by a period of 'Distance Learning' in which you will complete assignments.

This leads to a final theory exam at this point, but this can be extended to suit your circumstances, we are always flexible. Potential earnings as an Equine Nutrition Advisor €60 to €75 per written consultation.

A fully flexible training course combining attended learning and distance learning with the completion of assignments and case studies, completion timescale is circa 6 months. All course material will be provided.

Final Assessment & Certification = €200
*Monthly Payment Plans are available.

Course Equine Health & Nutrition Management

Course Certification UK Rural Skills accredited, align to level 5,

Duration 4 days attended learning followed by 6 months distance learning.

Online or On-site Online and On location

Apply for this course online www.equied.com

RACEHORSE INTEGRATIVE SUPPORT THERAPIES

UK RURAL SKILLS ACCREDITED, ALIGN TO LEVEL 5

The level 5 is a specialist qualification for the Horse Racing Industry designed to produce industry specific Therapists thus creating a pool of excellence within horse racing therapy and welfare.

Overview of the course

Delivered by the International training organisation EMA Ltd and Equi-Ed with UK Rural Skills accreditation. On completion of the qualification, Therapists will be able to perform a comprehensive range of massage therapy & rehabilitation on horses internationally. It doesn't get any better than this standard!

The qualification provides extremely high standards of training at competitive fees, given the earning potential once qualified We also offer a number of add on CPD (continuing professional development) training days in associated therapies, both complementary and alternative such as Kinesio Taping and many more to supplement your skills in Massage Therapy to be the best you can be. Whether you want to work as a self-employed Therapist or directly for a Trainer then this is the course for you!

If you ever decide to leave the racing industry you can 'top up' on modules of our course that allows you to work on any equine discipline, not only racing.

Our training principles are based on objective, evidence-based research and a thorough understanding of the Thoroughbred and its training as a racehorse. This approach takes into account the horse's behaviour and psychology and its physical structure including anatomy and physiology with a specific interest in injury prevention and therapy.

We also cover a number of relevant supplementary subjects providing an 'all encompassing' programme of study, including work rider/jockey and horse anatomical relationship, the importance of tack and equipment in therapy and much more....

You will learn a host of practical massage techniques such as sports massage, deep tissue muscle release, myofascial release, trigger point therapy, joint mobilisation and full passive stretch routines and more!. A combination of all of these techniques produces an Equine Massage Therapist second to none with the skills and ability to help Racehorses to perform and recover better, ultimately enhancing their health and wellbeing.



Course Applied Racehorse Support Therapy – CPD

Course Certification UK Rural Skills accredited, align to level 5

Duration 14 months 2 Modules. Module 1 comprises of online lectures and on-site days followed by distance learning where case studies and assignments are required. Mod 2 is run the same way 6 months later.

Where is course delivered? Online and On location

Financial Support If you are currently working within the thoroughbred industry you may qualify for a grant- get in touch for more info.

Apply for this course online www.equied.com

EQUINE BIT & BRIDLE FITTING CONSULTANT

LEVEL 5

Join us today and become a certified Equine Bit and Bridle Fitting Consultant, ready to make a positive impact in the equestrian world.

Overview of the course

As a participant in our Equine Bit and Bridle Fitting Consultant Programme, you will delve into the intricate world of horse welfare and performance with a focus on enhancing their abilities and overall well-being. Our accredited program, ensures that you receive top-notch training and knowledge to make a positive impact in the equine industry.

Throughout the course, you will gain valuable insights into the proper fitting of bits and bridles to optimize comfort and communication between horse and rider. By completing this program, you will not only expand your expertise but also join a community of dedicated professionals committed to upholding the highest standards in equine care.

Who is this course for?

The program has been developed by musculoskeletal and bit specialists, ensuring you a complete and thorough educational experience endorsed by top industry professionals.

By the conclusion of this training, you will become a well-informed and empathetic supporter of equine welfare and performance by mastering the art of fitting equine bits and bridles correctly.



What you will learn

Throughout this course, you will embark on a rewarding journey where you will:

- Explore the essential equine anatomy to understand how vital structures affect the comfort and well-being of horses when using tack.
- Recognize subtle and obvious behavioural signals that indicate discomfort or pain caused by poorly fitting tack.
- Acquire hands-on experience in fitting bits and bridles.
- Develop the skills to troubleshoot, identify, and resolve common issues related to bit and bridle fit, becoming a reliable source for effective solutions in improving equine comfort and performance.
- Embrace a comprehensive approach to equine care, advocating for the welfare of all horses by enhancing their quality of life through proper bit and bridle fitting practices.

Course Equine Bit and Bridle Fitting Consultant

Course Certification Professional | Accredited by the IRVAP and UKRS Level 5

Duration 6-8 months in total.

Where is course delivered? Blended learning

Apply for this course online www.equied.com

PRACTITIONER IN CANINE THERAPY

UK RURAL SKILLS ACCREDITED, ALIGN TO LEVEL 5

We are delighted to offer this exciting Canine Massage Therapy for Health and Performance align with Level 5 training course, launched early 2017. This course is totally up-to-date with techniques and scientific research to underpin the training and is approved by UK Rural Skills.



Overview of the course

The course has the same high standards offered by its sister company Equine Massage Academy to produce highly educated and passionate professionals within the canine complimentary healthcare sector. Essential to support veterinary medicine today.

Training deliverables

By training to become a Canine Massage Therapist the opportunities are endless, you may wish to incorporate your skills into your existing kennel/boarding business, dog walking, dog training, grooming, hydrotherapy etc. , or if you are applying for jobs in the canine industry, the knowledge and skills you will have learned are an instant advantage when applying for jobs: Employers are keen to have people who can multi-task within their team of canine professionals.

Once trained as a Canine Massage Therapist, we offer an exciting range of continuing professional development training (CPD) to keep Therapists current with industry and techniques and other related topics. As such we are delighted to work with the eminent Dr Isla Fishburn, of Kachina Canine Communication.

Isla is an international leader in holistic canine behaviour and welfare. We have been working with Isla since 2018 to develop some exciting training courses specific to the Academy of Integrative Animal Therapies.

Training principles

Our training principles are based on objective, evidence based research and a thorough understanding of the dog. This approach takes into account the dog's behaviour and psychology and its physical structure including anatomy and physiology with a specific interest in injury prevention and treatment and also the growing focus in biomechanics. We also cover a number of relevant supplementary subjects providing an all encompassing' programme of

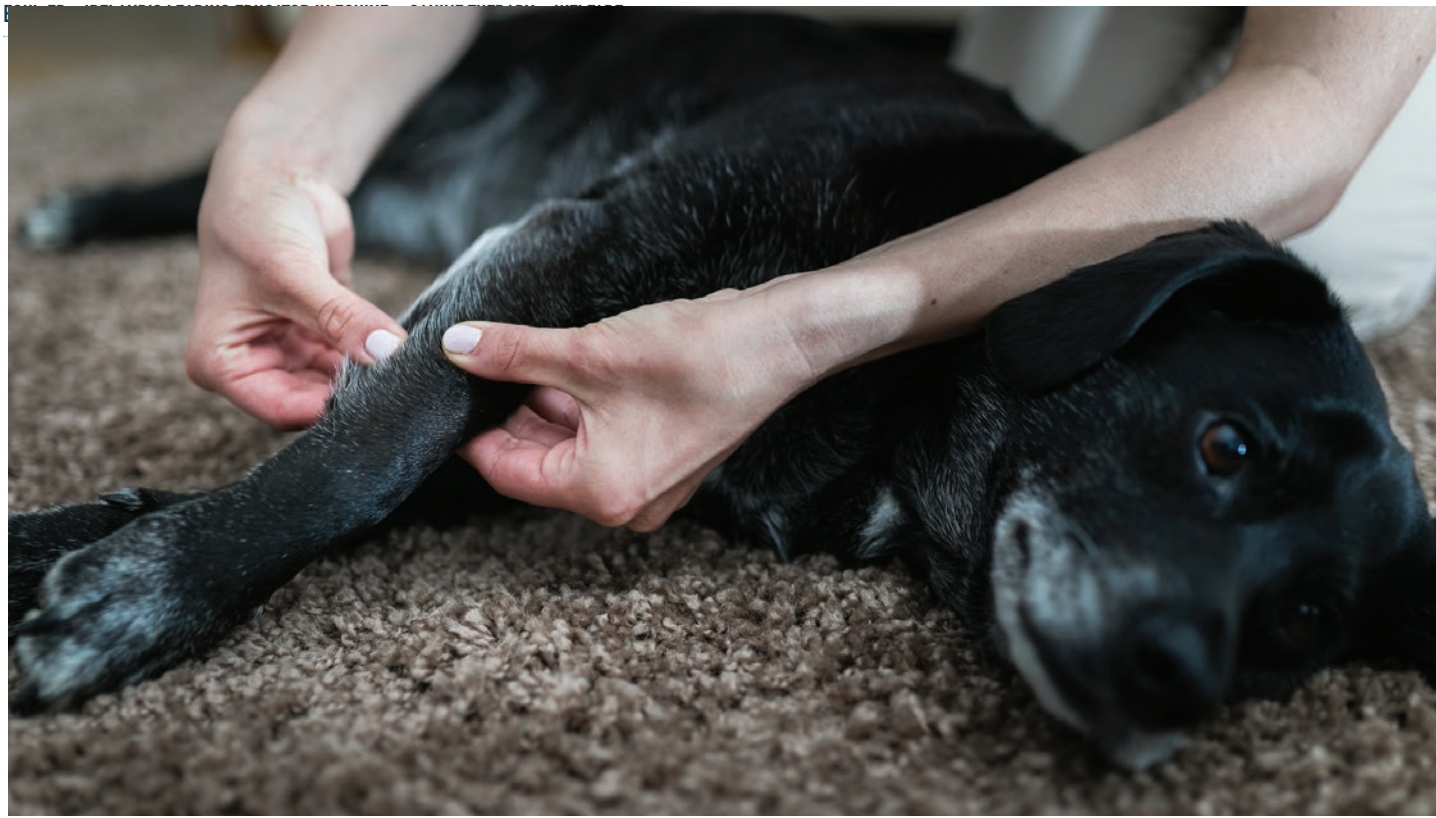
Course Practitioner in Canine Therapy

Course Certification UK Rural Skills accredited, align to level 5

Duration 9-12 months in total.

Where is course delivered? Blended learning

Apply for this course online www.equied.com



Skill-sets from the course

From the practical aspect we teach a host of massage techniques to produce a Therapist second to none with the skill and ability to work with a variety of dogs whether a family pet or a working or show dog. Our therapists will be able to use massage therapy to help with the following in industry (and much more):

- Rehabilitation following injury or surgery
- Improve muscle performance which includes the health of muscles and soft tissues, gait and exercise
- Mobility issues from those associated with simply climbing the stairs to performing agility exercise which may be due to a variety of reasons including orthopedic conditions such as arthritis, hip dysplasia etc.
- General discomfort – the dog may have lost its sparkle and in need of support
- Dogs that are displaying signs of stress, anxiety and depression and other behaviour issues that often manifest in muscular discomfort.

Support from industry experts

Therapists will also be equipped to offer advice on many other elements of dog care, from a training course that is 'all encompassing' and second to none. Being supported by industry experts, we have all that you need in one place. This allows us to build long-term relationships with our Graduates, with on-going support throughout their career.

How long is the course?

The course duration is 9-12 months in total and Blended learning. You will have a period of 4 days tuition with us followed by distance learning during which time you will undertake assignments and practical case studies on dogs. The programme has the flexibility for you to qualify within a year if you have the time and dedication, or longer depending on your other commitments.

Equi-Ed CPD & owner courses

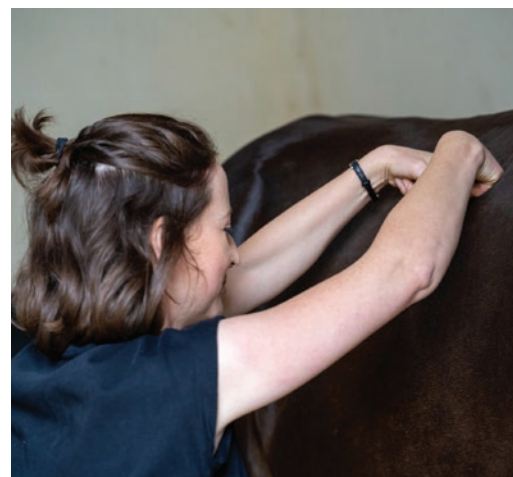
We offer a variety of learning formats, including online and distance learning options to accommodate the needs of our diverse student population.



EQUINE MASSAGE FOR HORSE OWNERS

UK RURAL SKILLS ACCREDITED, ALIGN TO LEVEL 3, (4 IRISH FRAMEWORK)

A practical course designed for the horse owner to learn a new skill to look after the muscular system of their own horse. They will learn how this helps with both the physical and psychological aspects of the horse.



Overview of the course

Animal welfare, trust and bonding between horse and owner, help with injury prevention and improved performance are all key aspects of this training.

The clinic duration is around 6 hours with a short lunch break. Depending on the venue, you can use your own horse or one belonging to the equestrian centre or college we are using.

We usually work in pairs (but you can work alone) in a relaxed atmosphere with lots of interaction and hands on massaging throughout the day by following Therese's demonstrations and expert guidance.

You have the opportunity to ask questions as you work with the horses. Be prepared to learn a lot and go away a little tired but you'll also feel invigorated and eager to get started with your new skills!

These practical, very hands on and excellent value for money 1 day clinics are designed

for all horse owners who want to provide the best care for their horses and discover a new equestrian skill at the same time.

By learning Equi-Eds unique combination of massage techniques you will be able to undertake a full massage on your horse. The techniques can be performed pre competition, post competition, to help muscle injuries and as a general maintenance massage.

By working through the physical and psychological aspects of the horse you will discover that massage not only improves performance, wellbeing and helps prevent injury but when an owner learns to massage their own horse it embraces a deeper trust and bonding in the partnership bringing a remarkable experience for both.

Course Equine Massage for Horse Owners

Course Certification UK Rural Skills accredited, align to level 3, (4 Irish Framework)

Duration 1 day

Where is course delivered? On Location Ireland, Scotland and Canada

Book this course online www.equied.com

EQUINE NUTRITION FOR HORSE OWNERS

A must for all horse owners. What to feed horses of various breeds, ages, equestrian disciplines and those with disorders can be overwhelming with the vast array of products and conflicting information available.

Overview of the course

This training provides the learner with a good depth of knowledge of nutrition that underpins equine health and nutrition management for horse owners. A very comprehensive full day course with a practical element too.

Course Equine Nutrition for Horse Owners

Duration 1 day

Where is course delivered? On Location



OPTIMUM MANAGEMENT FOR TRAVELLING HORSES. CERTIFICATE OF COMPETENCY

CERTIFICATE OF COMPLETION (4 IRISH FRAMEWORK)

Whether you embark on short leisure trips or long commercial journeys with horses, this course is an absolute must for you.

Overview of the course

Learn from seasoned experts and discover the art of responsible and caring horse travel. Our top priority is the well-being of all horses, ensuring they experience utmost comfort and safety during every journey, with a strong focus on high welfare standards.

Gain insights into how horses hold their bodies in transport and the potential damages, and master effective strategies to mitigate such risks and more. Prepare to learn a wealth of fascinating facts that serve as essential tools for your future traveling with horses.

Course Optimum Management for Traveling Horses.

Course Certification Certificate of completion

Duration 4 hours

Where is course delivered? Online -



Book this course online www.equied.com

EQUINE EMERGENCY FIRST AID

UK RURAL SKILLS ACCREDITED, ALIGN TO LEVEL 3, (4 IRISH FRAMEWORK)

All custodians of horses share a common dread which is facing a medical emergency.

Overview of the course

Whether you are the owner, trainer, or groom, the responsibility for the horse's welfare weighs heavily. Being prepared for such emergencies and knowing the appropriate actions can be the determining factor between life and death for the horse. In our training, we will give you sound advice for medical emergencies and show you how to accurately take vital signs and administer first aid in various situations.

It is essential for all horse owners to learn how to take vital signs correctly. Regularly monitoring these signs provides an overall impression of the horse's state of health and enables you to detect any deviations early on. By staying vigilant, you can identify potential problems at their onset and take prompt action, safeguarding your horse's well-being.

Anyone providing a professional service such as a Therapist, Riding Instructor, Hydrotherapy Centre, Livery Yard Owner, Equestrian Centre staff etc should take this course to show their clients they are well prepared for all eventualities.



COLIC & GUT HEALTH. PREVENTION & MANAGEMENT

UK RURAL SKILLS ACCREDITED, ALIGN TO LEVEL 3, (4 IRISH FRAMEWORK)

Understanding equine colic and gut health is of utmost importance for every horse owner, equestrian enthusiast, and equine caretaker.

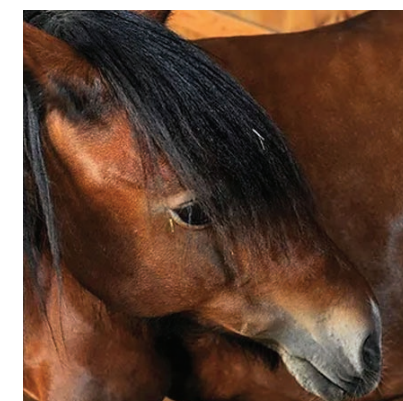
Overview of the course

Colic is a prevalent and potentially life-threatening condition that affects horses of all ages, breeds, and disciplines. Being knowledgeable about its prevention and management can significantly impact the well-being and longevity of horses.

The equine digestive system is delicate and highly sensitive, making it susceptible to various issues that can arise from improper feeding practices, dietary changes, parasites, stress, and other factors.

Knowing how to recognise early signs of colic, implementing preventive measures, and having the necessary tools to manage colic episodes can be critical in reducing the risk of severe complications and ensuring prompt, effective treatment when needed.

A well-informed approach to equine colic and gut health will not only promote the overall health and performance of horses but also foster a sense of responsibility and care that is fundamental to responsible horse ownership.



Course Colic & Gut Health. Prevention & Management

Course Certification UK Rural Skills accredited, align to level 3, (4 Irish Framework)

Duration 6 hours / Online

EQUINE BIOSECURITY BEST PRACTICE PROTOCOLS

UK RURAL SKILLS ACCREDITED, ALIGN TO LEVEL 3, (4 IRISH FRAMEWORK)

Overview of the course

This is the first training of its kind, written by industry health & safety and equine experts. The training is intended for all equestrian premises and industry operators such as livery yards, competition yards etc. People who work in the industry such as Therapists, Grooms, Riding Instructors all those who need to show their equine customer they can operate strict bio-security protocols which are essential to stop the spread of disease (we've really

learned this through Covid-19).

Also, anyone who owns a horse, you'll all be amazed at what is obvious in bio-security but also what you might never have never thought about but places your horse and you at risk of disease. Complete with car sticker templates, posters for display at your premises and much more.



Course Equine Bio-security Best Practice Protocols

Course Certification UK Rural Skills accredited, align to level 3, (4 Irish Framework)

Duration 6 hours / Online

Course Equine Emergency First Aid

Course Certification UK Rural Skills accredited, align to level 3, (4 Irish Framework)

Approved by Approved by the British horse society for CPD

Duration 1 day

Where is course delivered? On location

Book this course online www.equied.com

Book this course online www.equied.com

TRAINING HORSES FROM AN ANATOMICAL PROSPECTIVE

LEVEL 3 (4 IRISH FRAMEWORK)

Training horses from an anatomical perspective is a fundamental aspect of equestrian education that ensures the welfare and optimal performance of the equine athlete, be it a leisure horse or competitor

Overview of the course

Understanding the horse's anatomy is crucial in developing training methods that promote biomechanical efficiency and prevent injury. It begins with an appreciation of their musculoskeletal structure and how it influences their movement.

Training programmes that consider the development of core strength, proper alignment, and flexibility to enhance balance and coordination. Focusing on the horse's biomechanics helps owners and trainers tailor exercises that promote muscle development and suppleness, enabling the horse to engage its entire body effectively.

Furthermore, a thorough grasp of equine anatomy aids in recognising early signs of discomfort or strain, allowing prompt intervention and overall better care. By taking an anatomical approach to training, equestrians can build a strong foundation for the horse's physical well-being and ensure a harmonious partnership built on trust and understanding.



Course	Training horses from an anatomical prospective
Course Certification	Level 3 (4 Irish framework)
Approved by	The British Horse Society
Duration	6 hours
Where is course delivered?	Online

ADVANCED MYOFASCIAL RELEASE & KINETIC CHAINS

UK RURAL SKILLS ACCREDITED,
ALIGN TO LEVEL 3, (4 IRISH FRAMEWORK)

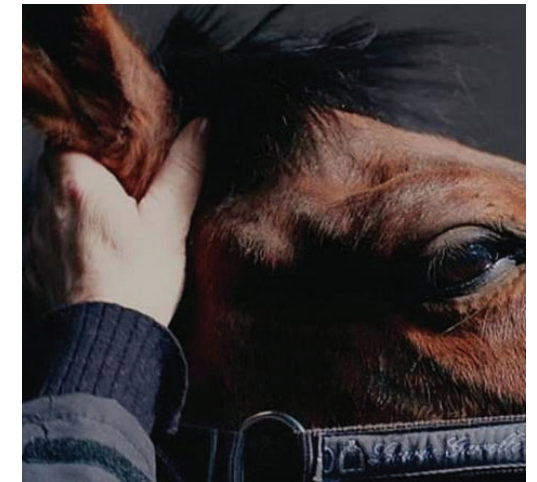
This course is at the forefront of scientific research in myofascial release. It will greatly enhance musculo-skeletal and myofascial assessment skills whilst also integrating a variety of 'Advanced' myofascial release techniques into your therapy work.

Overview of the course

This achieves instant and long lasting results and is a very important modality for Therapists when working with myofascial restrictions that impact on compensation patterns, posture and the horse in motion.

This exceptional course stands at the cutting edge of scientific research in myofascial release, offering a remarkable opportunity to enhance your musculoskeletal and myofascial assessment skills. You can seamlessly integrate a diverse range of advanced myofascial release techniques into your therapy practice.

This transformative approach brings immediate and long-lasting results, making it an invaluable modality for therapists who strive to address myofascial restrictions that directly affect a horse's pain, posture, motion and the development of compensation patterns.



Course	Advanced Myofascial Release & Kinetic Chains
Course Certification	UK Rural Skills accredited, align to level 3, (4 Irish Framework)
Duration	1 day
Where is course delivered?	On location

Book this course online www.equied.com

Book this course online www.equied.com

EQUINE SPINAL FREEDOM MOBILISATION TECHNIQUES

UK RURAL SKILLS ACCREDITED, ALIGN TO LEVEL 3, (4 IRISH FRAMEWORK)

Participants will learn advanced palpation techniques to assess and identify musculoskeletal issues in horses accurately before performing mobilisation techniques to the axial (central) and appendicular (limbs) skeleton of horses.

Overview of the course

The mobilisation techniques taught in the programme serve two primary purposes: by increasing joint fluid to the targeted areas and activating a reflex response in the spinal cord, leading to the relaxation of muscles around the bones and joints. This can help in reducing tension and improving range of motion and overall mobility.

It's important to note that the skills taught in this programme are based on the principles of chiropractic work, which focuses on the alignment and function of the musculoskeletal system. However, completion of this training does not qualify participants as equine chiropractors. Chiropractic work typically requires specialised and comprehensive certification beyond the scope of this particular training

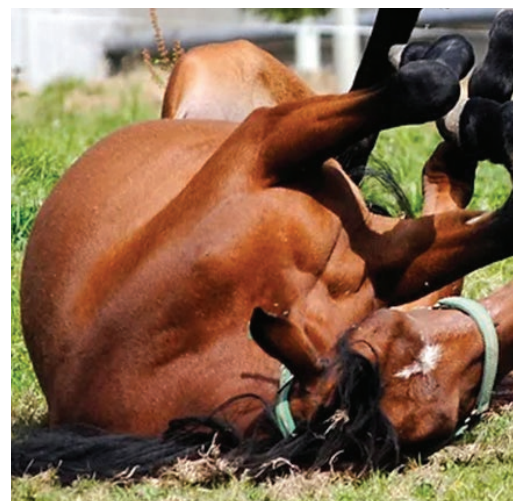
Overall, the training aims at enhancing the participants' abilities to work with horses by providing them with valuable techniques to promote joint health, mobility, and overall well-being. Another great tool to your repertoire of skills.

Course Equine Spinal Freedom mobilisation Techniques

Course Certification UK Rural Skills accredited, align to level 3, (4 Irish Framework)

Duration 2 days

Where is course delivered? On Location



HORSE BIT & BRIDLE ASSESSMENT FOR EQUINE PROFESSIONALS

UK RURAL SKILLS ACCREDITED, ALIGN TO LEVEL 3, (4 IRISH FRAMEWORK)

Overview of the course

This course has been designed to give any equestrian including Therapists, Saddle Fitters, Riding Coaches, Trainers and Horse Owners beneficial training in selecting the correct bit/bridle for their horse as this has a definite impact not only on equine performance, biomechanics, injury prevention but welfare too.

The course covers how to select the correct bit according to the horse and its requirements. This is a more complex process than many people think and involves mouth conformation, horse preferences, tongue thickness and much more. Ridden, behavioural and musculoskeletal problems can often be rectified from correct biting.

Course Horse Bit & Bridle Assessment for Equine Professionals

Course Certification UK Rural Skills accredited, align to level 3, (4 Irish Framework)

Duration 7 hours / Online



EQUINE LYMPHATIC DRAINAGE

UK RURAL SKILLS ACCREDITED, ALIGN TO LEVEL 3, (4 IRISH FRAMEWORK)

Equine lymphatic drainage is a specialised therapeutic technique aimed at promoting optimal lymph circulation in horses.

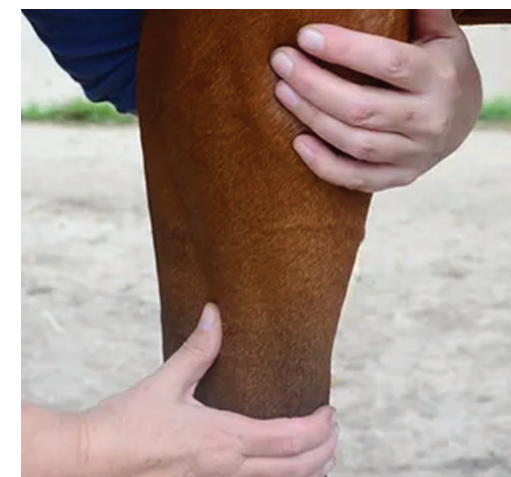
Overview of the course

The lymphatic system plays a crucial role in maintaining the horse's overall health and immune function. This gentle and rhythmic massage technique assists in the removal of waste products, toxins, and excess fluid from the horse's tissues, reducing inflammation and oedema.

For therapists, mastering equine lymphatic drainage can be highly beneficial as it enhances their repertoire of skills, offering a non-invasive and natural approach to supporting the horse's well-being. By improving lymphatic flow, this technique

can aid in the prevention and treatment of various equine health issues, such as swollen limbs, cellulitis, and skin disorders.

Additionally, equine lymphatic drainage helps in post-injury recovery, promoting faster healing and reduced scar tissue formation. Overall, adding this valuable technique to a therapist's toolbox can significantly contribute to providing comprehensive and effective care for equine clients.



Course Equine Manual Lymphatic Drainage

Course Certification UK Rural Skills accredited, align to level 3, (4 Irish Framework)

Duration 6 hours / Online

Book this course online www.equied.com

Book this course online www.equied.com

ADVANCED ASSESSMENT & PRESCRIPTION FOR PERFORMANCE & REHABILITATION

UKRS LEVEL 3

Elevate your equine therapy practice with this advanced training for professionals. Aimed at Manual Therapists, Trainers, Veterinarians and other Horse Care Specialists.



Overview of the course

Discover Proven Exercises for Strength, Conditioning, and Injury Rehabilitation. Experience the Power of Neuromuscular Stimulation for Effective Pain Relief.

Not to be missed for the professional who wants to take their equine practice to the highest level.

What's Included

Multimedia Training with Engaging Video Lectures. In-depth units on: Injury Cause and Effect, Clinical Reasoning and Diagnostics. Correct Movement and Lameness Assessment Techniques, Functional Therapeutics for Advanced Equine Care.

Comprehensive Printable Manuals with a Dedicated Exercise Guide for strength and conditioning training and rehabilitation of injuries.

Course	Advanced Assessment & Prescription for Performance & Rehabilitation
Course Certification	UKRS level 3
Duration	8 hours
Where is course delivered?	Online - Delivered over 4 2 hour lecture sessions

HOLISTIC THERAPY FOR ALL BREEDING STOCK

UK RURAL SKILLS ACCREDITED, ALIGN TO LEVEL 3, (4 IRISH FRAMEWORK)

Unleash the full potential of your breeding stock through our all-encompassing and transformative Holistic Therapy for All Breeding Stock course



Overview of the course

Step beyond conventional care as we equip you with invaluable knowledge and techniques to guarantee the health and well-being of mares, foals, stallions, and youngsters alike. From nutrition to stress reduction, preconception to postpartum, our course leaves no aspect of breeding stock care unexplored, enhancing their reproductive performance and fostering a harmonious and thriving environment.

Guided by seasoned experts in breeding and equine therapy, you'll acquire profound insights and practical skills, elevating your breeding to new heights. Embrace the holistic approach and witness the positive impact it will have on your breeding stock, whether you're a professional stud, a horse owner with a mare and foal, or a therapist venturing into breeding stock. The course includes an opening video presentation, a comprehensive manual, and five instructional videos showcasing massage therapy for all equine breeding stock.

This training ensures your breeding stock receives the utmost support they deserve. Join us now to embark on a journey of empowerment and excellence in breeding care.

Course	Holistic Therapy for all Breeding Stock
Course Certification	UK Rural Skills accredited, align to level 3, (4 Irish Framework)
Duration	6 hours
Where is course delivered?	Online

Book this course online www.equied.com

Book this course online www.equied.com

EQUINE WATER TREADMILL TRAINING

UK RURAL SKILLS ACCREDITED, ALIGN TO LEVEL 3,
(4 IRISH FRAMEWORK)

Welcome to our state-of-the-art equine water treadmill course, designed exclusively for horse enthusiasts and professionals alike.

Overview of the course

We unveil the secrets of this ground-breaking training method. Our comprehensive programme combines theoretical knowledge with hands-on practical sessions, equipping participants with the skills to harness the benefits of hydrotherapy for equine athletes. Led by industry experts, this immersive course delves into the science behind water treadmills, their physiological advantages, and customised training techniques.

The course includes a comprehensive training manual, a user guide and several videos of horses using the equipment. The videos are critiqued, providing you with practical information on what you should be looking for whilst monitoring the horse on the equipment at various water heights. Such as how it is coping, whether it is beneficial or should the water height be altered depending on the horse's movement, posture, breathing and much more.



Course	Equine Water Treadmill Training
Course Certification	UK Rural Skills accredited, align to level 3, (4 Irish Framework)
Approved as	CPD training by the British Horse Society
Duration	6 hours
Where is course delivered?	Online

EQUINE CONFORMATION, BIOMECHANICS & BEYOND

UK RURAL SKILLS ACCREDITED, ALIGN TO LEVEL 3,
(4 IRISH FRAMEWORK)

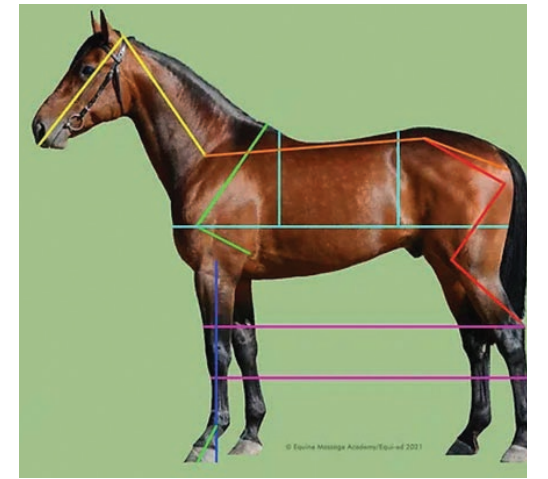
Unlock the secrets of equine excellence with our comprehensive course on Equine Conformation, Biomechanics, and Beyond!

Overview of the course

You will journey into the art and science of evaluating equine structure, movement, and performance. Whether you're an aspiring horse enthusiast, a seasoned equestrian, or a professional, this course offers a unique opportunity to refine your eye for conformational details, understand the intricacies of equine biomechanics, and explore cutting-edge advancements in the field.

A level 3 accredited course not to be missed – it's of huge benefit to all horse owners who attend, and to their horses! We will take you through conformation, the realities and the misconceptions.

The importance of functional conformation, biomechanics and posture which are all linked to the overall performance and soundness of any horse performing in any discipline, from the leisure horse to world class athletes.



Course	Equine Conformation, Biomechanics & Beyond
Course Certification	UK Rural Skills accredited, align to level 3, (4 Irish Framework)
Approved as	CPD training by the British Horse Society
Duration	6 hours
Where is course delivered?	Online

The variations in conformation between and within different breeds, the best conformation requirements for a specific discipline are all discussed.

You will be able to review your training practices based on what your horse is best suited to for the avoidance of injury. Many horses are trained in the way but their conformation doesn't lend itself to a generic approach.

You will never look at a horse in the same way again once you have learned the top tips from industry experts.

By following our expert guidance, you will gain valuable insights into optimising horse health and maximizing athletic potential.

Book this course online www.equied.com

Book this course online www.equied.com

EQUINE LAMENESS - THE FULL EXTENT

UK RURAL SKILLS ACCREDITED, ALIGN TO LEVEL 3, (4 IRISH FRAMEWORK)

Are you ready to take your equine expertise to the next level? "The Full Extent of Equine Lameness," the ultimate course for horse enthusiasts and professionals alike!

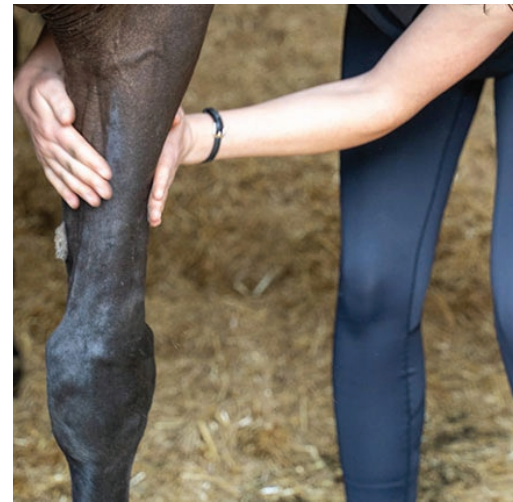
Overview of the course

Join us on a journey of discovery as we delve deep into the fascinating world of equine lameness. This course offers a comprehensive exploration of the topic like never before.

This course will equip you with the knowledge and skills to understand and address lameness issues in horses with confidence, unlocking the secrets to soundness and wellbeing in horses.

This in-depth training will teach the owner what you really need to look for when assessing lameness and what is often missed by owners and professionals alike. All of which has major consequences of moving forward with lameness rehabilitation and management. Many don't even know the subtle signs of lameness, but you will learn them.

A fascinating day with lots of valuable information and multimedia observational discussions.



Course	Equine Lameness - The full Extent
Course Certification	UK Rural Skills accredited, align to level 3, (4 Irish Framework)
Approved as	CPD training by the British Horse Society
Duration	6 hours / Online

EQUINE CRANIO-SACRAL THERAPY

UKRS LEVEL 3

Equine craniosacral therapy offers a myriad of benefits to horses, promoting overall well-being and addressing various physical and emotional issues.

Overview of the course

This gentle, non-invasive therapy involves applying subtle motions to the horse's head, neck, spine and extremities to release tension and improve the flow of cerebrospinal fluid throughout the body. The therapy helps alleviate musculoskeletal problems, such as stiffness and soreness, postural issues while also targeting nervous system imbalances.

By reducing stress and promoting relaxation, it can enhance the horse's emotional state and behaviour, making them more receptive and cooperative during training. Additionally, equine craniosacral therapy has shown promise in supporting recovery from injuries and enhancing performance in athletic horses.

Overall, this holistic approach fosters a deeper connection between horse and handler, leading to a happier, healthier, and more balanced equine partner.



Course	Equine Cranio-Sacral Therapy
Course Certification	UKRS level 3
Duration	7 hours
Where is course delivered?	On Location

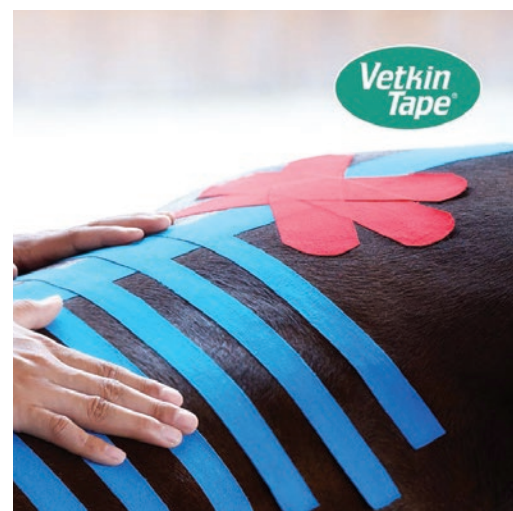
Book this course online www.equied.com

Book this course online www.equied.com

VETKINTAPE® EQUINE KINESIOLOGY TAPING COURSE

EQUI-ED CERTIFICATE OF ATTENDANCE

Each course consists of two days (8 hours each), has a mixture of theory and practice and is organised at venues with enough room for practical exercises. During the courses, the instructors will use video's, pictures and real-life cases. The courses are accredited in several EU-countries by the local animal physiotherapy associations or vet associations. During these courses a manual, rolls of VetkinTape®, scissors and other supporting materials are provided.



Course Programme

- Theoretical background of the Medical Taping Concept (human & Vet)
- Various application possibilities:
- Activating the blood and lymph circulation for swellings and hematoma
- Influencing the fascia and muscles
- Treatment of scars
- Tendon injuries and inflammations (follow-up) Treatment of injuries to the Musculoskeletal System
- Improvement of the muscle function
- Supporting the joint function
- Case histories and applications for horses and humans related to the following effects:
- Injured muscles – to lifts the skin from the underlying tissues. This has an effect of reducing pain, promoting circulation,
- Assisting in the reduction of any swelling and enhancing the blood flow to the injured muscle
- Biomechanical dysfunction – to provides support or stability without restricting the range of motion
- Postural dysfunction – to improves the proprioceptive feedback to the area thereby assisting in the retraining of muscles that maintain correct posture
- Practical approach with cases

This course is designed for:

- Animal physiotherapists
- Veterinarians
- Other animal medical professionals (depending on the local education)

What's included

- Official equine therapy certification
- Educational material

Course Vetkintape® Equine Kinesiology Taping Course

Course Certification Equi-Ed Certificate of attendance / Basics of anatomy

Duration 2 days, 8 hours per day

Where is course delivered? On Location

DISSECTION - FORELIMB & HIND-LIMB

EQUI-ED CERTIFICATE OF ATTENDANCE

This hands-on day course offers an insight into the anatomy of the horse and provide a rare and invaluable opportunity to look at the structures we influence by training and therapy.

Overview of the course

Participants will learn about the underlying structures of the horse, including the skeletal, muscular, and nervous systems. They will also get the chance to examine these structures in detail, using a variety of tools and techniques. This knowledge will help participants to better understand how different training and therapy methods can impact the horse's physical well-being and performance. In addition, the courses may cover topics such as common injuries and conditions that affect horses, and how to prevent or treat them. Overall, these courses provide a unique learning experience for anyone interested in equine health and welfare.

Areas of Interest for Riders, Coaches and Therapists If you're a rider, coach or therapist, you may find the following areas of interest to be useful:

- The Stay Apparatus and Reciprocal System
- The Suspensory and Check Ligaments
- The Biceps Catapult
- Sacroiliac Joint Ligaments
- Patella Ligaments
- The Thoracic Sling



Understanding the anatomy and function of these areas is crucial for anyone involved in horse riding or therapy. The stay apparatus and reciprocal system, for example, are important for maintaining a horse's balance and stability while standing or moving. The suspensory and check ligaments are responsible for supporting the horse's limbs during movement, while the biceps catapult helps to initiate movement in the forelimbs.

The sacroiliac joint ligaments and patella ligaments are important for maintaining the horse's posture and preventing injuries, while the thoracic sling plays a crucial role in supporting the horse's back and ribcage. By having a deep understanding of these areas, riders, coaches, and therapists can better care for their horses and help them perform at their best.

Course Dissection - Forelimb dissection and hind-limb

Course Certification Equi-Ed Certificate of attendance

Duration One day course

Where is course delivered? Location

Book this course online www.equied.com

Book this course online www.equied.com

EQUINE DISSECTION WITH BECKS NAIRNS

EQUI-ED CERTIFICATE OF ATTENDANCE

Understanding the Horse's Story: A Comprehensive Course on Equine Anatomy and Biomechanics.

Course Programme

Every horse has a story to tell, and it's up to you to decipher it. Our course aims to provide therapists, saddle fitters, hoof carers, trainers, and horse enthusiasts with the knowledge and experience necessary to unravel the mysteries of the horse's anatomy and biomechanics.

By examining what's beneath the skin, you'll gain insight into how problems arise and how they can affect the rest of the body. You'll learn how to prevent and solve these issues, gaining a unique opportunity to experience the effects of different bits on the movement of the hyoid and the hind and front legs. We'll also demonstrate the impact of the saddle on the range of motion.

Becks will guide you through the various layers of the horse's body. You'll learn how each component functions separately and how it's intertwined with the whole body. Not only will you gain insight into the horse's life, but you'll also learn how equine anatomy and biomechanics vary within breeds and even among individuals.



Join us for a two-day journey through the horse's anatomy. The subjects we'll cover include:

- Fascia
- Muscle layers and their function and connections
- Joints and attachment of muscles
- Tendons and ligaments
- Veins
- Head and all muscles, hyoid and nerves
- Lymph nodes
- Vertebras
- Organs

Discover the secrets that lie within the horse, and learn to tell its unique story.

Course Equine Dissection with Becks Nairns

Course Certification Equi-Ed Certificate of attendance / Basics of anatomy

Duration 2 days

Where is course delivered? On Location Ireland and Scotland



Book this course online www.equied.com

Canine courses

CANINE FIRST AID & CPR

UKRS LEVEL 3

In this comprehensive course, we will cover everything you need to know about providing immediate care for dogs in emergency situations.

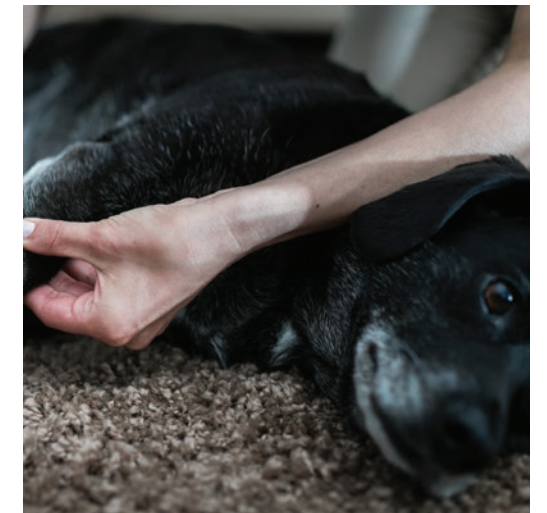
Overview of the course

Throughout the course, you will learn essential skills and knowledge to effectively respond to common canine injuries and emergencies. We will guide you through the proper techniques for handling injured dogs, assessing their vital signs, and administering basic first aid procedures.

Topics covered in this course include:

1. Understanding common canine injuries and emergencies: We will explore various injuries and emergencies that dogs may encounter.
2. Assessing vital signs: You will learn how to assess a dog's vital signs, such as heart rate, respiratory rate, and body temperature, to determine their overall health status.
3. Basic first aid procedures: We will provide step-by-step instructions on how to treat common injuries.
4. CPR and rescue breathing: You will gain the knowledge and skills necessary to perform cardiopulmonary resuscitation (CPR) and rescue breathing on a dog in case of cardiac arrest or respiratory distress.

We are excited to have you join us on this important journey of learning how to be a capable and compassionate first aider for our canine friends!



Course Canine First aid & CPR

Course Certification UKRS level 3

Duration 7 hours

Where is course delivered? On location

CANINE MASSAGE FOR DOG OWNERS

EQUI-ED CERTIFICATE OF ATTENDANCE

Delve into the world of canine care with our one day massage course for dog owners. Learn to Relieve Your Dog's Muscle Tension and Soreness with Our Canine Massage Course

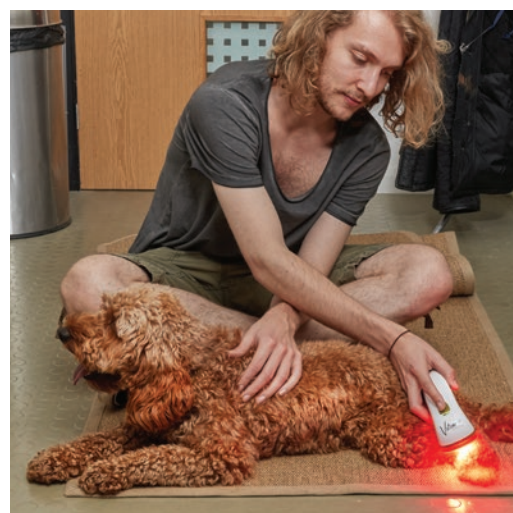
Overview of the course

If you're looking to help your furry friend live a happy, healthy life while also deepening your bond, look no further than our one-day Canine Massage for Dog Owners course. No prior experience is necessary – just a love for your dog and a desire to help them feel comfortable.

This course is designed for dog owners seeking to learn more about how to massage their pets at home, for both relaxation and relief of muscle soreness. However, if your dog has a specific pathology or has recently undergone surgery, we strongly advise you to seek the advice of a vet or animal physiotherapist before starting a massage regimen.

Here are the specific aims of our Canine Massage for Dog Owners course:

- Connect dog owners with their pets in a new and meaningful way, strengthening their bond
- Teach dog owners to perform basic assessments and choose appropriate massage techniques tailored to their dog's needs
- Give more dogs the opportunity to build muscle strength, improve mobility, reduce soreness, and relax
- Impart professional knowledge on dog owners to ensure the highest quality of care and safety for their pets
- Provide an easy and enjoyable method to support your dog's healing process after surgery, that can be done at home.

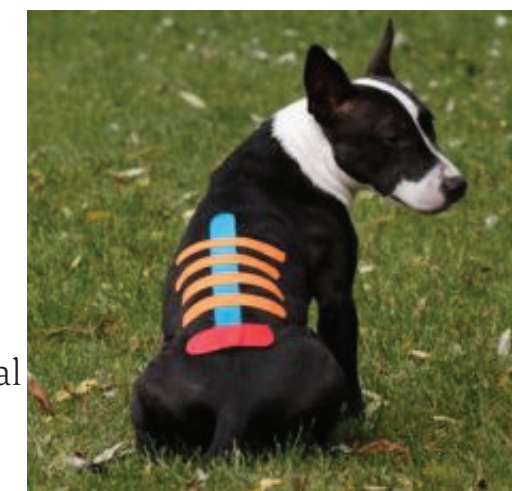


Course	Canine massage for Dog owners
Course Certification	Equi-Ed Certificate of attendance
Duration	1 Day
Where is course delivered?	On Location
How to Apply	Book this course online at www.equied.com/owner-courses/

Book this course online www.equied.com

CANINE KINESIOLOGY TAPING

The application of VetkinTape® on dogs, like the taping of equines, is an addition to the skill portfolio of canine physiotherapists and can be used during various treatments. It is commonly used for pain relief, improvement of blood circulation and lymph flow. It is a relatively new technique in veterinary rehabilitation and animal physiotherapy.



Overview of the course

After a short introduction and some product information, on the first day you will be introduced to our five basic techniques in theory and practice. For example, you will learn how to apply kinesiology tape to back and croup muscle problems, as well as taping joints and tendons, e.g. the Achilles tendon. During the course, you will also learn how to apply lymph taping in practice. On request, we can give you insight, in an entertaining way, into the kinesiological examination of the material.

The different applications will be directly put into practice during the course under the guidance of our expert teachers, on both short-haired dogs and on dogs with a long or hard coat (depending on the dogs present). In addition, on the day of the course, we will once again clarify the details of the various techniques and make a comparison with kinesiology taping in humans and horses, especially given the successful treatments and results.

On the second day we start with a short feedback of the previous day, followed by a large practical part. Besides group research and evaluation of the effect of kinesiology tape on dogs with various complaints and injuries, there will be plenty of room for input of your own cases or cases brought in by us and you will practice these. Each course consists of two, 8-hour days and has a mixture of theory and practice and is held at venues with enough room for practical exercises.

The courses are accredited in several EU-countries by the local Animal physiotherapy associations or vet associations.

Course	Canine First aid & CPR
Course Certification	Basics of anatomy
Duration	2 days, 8 hours per day On location

During the courses a reader, VetkinTape®, scissors and other supporting materials are provided.

Learn about:

- The principles of taping
- How to handle the tape and how to apply it on dogs
- Taping as a form of treatment in rehabilitation and training situations
- Working on the neuromuscular re-education in rehab dogs while performing therapeutic exercise
- Lectures and practical training-sessions will be alternated
- Case-based presentations, to give a good insight in the variety of taping indications.
- Practical training with real live cases

Who is this course suitable for?

- Animal physiotherapists
- Veterinarians
- Other animal medical professionals (depending on the local education)

Book this course online www.equied.com

EQUINE & CANINE COURSE LIST

CPD (CONTINUAL PROFESSIONAL DEVELOPMENT)

Equine Nutrition for Horse Owners
Optimum Management for Traveling horses, certificate of competency
Equine Emergency First Aid
Colic & Gut Health, Prevention & Management
Equine Bio-security Best Practice Protocols
Training Horses from an Anatomical Prospective
Advanced Myofascial Release & Kinetic Chains
Equine Spinal Freedom Mobilisation Techniques
Horse Bit & Bridle Assessment for Owners
Equine Manual Lymphatic Drainage
Advanced Assessment & Prescription for Performance & Rehabilitation
Holistic Therapy for all Breeding Stock
Equine Water Treadmill Training
Equine Conformation Biomechanics & Beyond
Equine Lameness – The Full Extent
Equine Cranio-Sacral Therapy
Vetkin Equine Kinesiology Taping for Professionals
Vetkin Canine Kinesiology Taping for Professionals
Dissection – Forelimb & Hind-limb
Equine Dissection with Becks Nairns
Phototherapy for Animals
Equine Tension Point Release
Racehorse to Riding Horse Aftercare
Empowering Equestrians with Saddle Fit
Exploring Fascia with John Sharkey
Equine Anatomy & Physiology
Buying A Horse, All You Need to Know
Kinesiology Taping for Horse Owners
Equine Neurology
Rocking Therapy
Fascial Tools & Cupping
Canine First Aid & CPR for Owners
Canine Massage for Owners

OWNER APPLICABLE COURSES

Equine Nutrition for Horse Owners
Optimum Management for Traveling horses, certificate of competency
Equine Emergency First Aid
Colic & Gut Health, Prevention & Management
Equine Bio-security Best Practice Protocols
Training Horses from an Anatomical Prospective
Horse Bit & Bridle Assessment for Owners
Equine Water Treadmill Training
Equine Conformation Biomechanics & Beyond
Equine Lameness – The Full Extent
Dissection – Forelimb & Hind-limb
Equine Dissection with Becks Nairns
Phototherapy for Animals
Racehorse to Riding Horse Aftercare
Empowering Equestrians with Saddle Fit
Equine Anatomy & Physiology
Buying A Horse, All You Need to Know
Kinesiology Taping for Horse Owners
Canine First Aid & CPR for Owners
Canine Massage for Owners

ONLINE COURSES

Equine Nutrition for Horse Owners
Optimum Management for Traveling horses, certificate of competency
Colic & Gut Health, Prevention & Management
Equine Bio-security Best Practice Protocols
Training Horses from an Anatomical Prospective
Holistic Therapy for all Breeding Stock
Equine Water Treadmill Training
Equine Lameness – The Full Extent
Phototherapy for Animals
Racehorse to Riding Horse Aftercare
Equine Anatomy & Physiology
Buying A Horse, All You Need to Know
Equine Neurology

PROFESSIONAL COURSES

Advanced Practitioner in Equine Integrative Support Therapies

Equine Health & Nutrition Management

Applied Racehorse Support Therapy

Equine Bit & Bridle Fitting Consultant

Practitioner In Canine Therapy

EQUI-ED HAVE OPENED NEW TRAINING DEPARTMENTS IN SCOTLAND, CANADA & NEW ZEALAND

Our team are thrilled to announce the expansion of Equi-Ed the leading Educator in Equine & Canine Therapy & Welfare, with a brand new department in Scotland, Canada & New Zealand.

CANADA

Advanced Practitioner Equine Integrative Support Therapies

Equine Massage For Horse Owners

Equine Emergency First Aid



SCOTLAND

Advanced Practitioner Equine Integrative Support Therapies

Equine Dissection with Becks Nairns

Equine Massage For Horse Owners



NEW ZEALAND

Advanced Practitioner Equine Integrative Support Therapies



ADMISSIONS POLICY & HOW TO APPLY

How to Apply for Professional Courses

- We accept an application to our professional career courses on the basis of facts which you supply to us through the application form online. You can start your application here. <https://equied.com/booking-professional/>
- Once we have accepted your application, we will send you a payment link. You must pay a deposit and agree to our terms and conditions.

How to Apply for CPD and Owner courses

You can book and pay for you your course online here at <https://equi-equied.com/owner-courses/>

Fees & Payment Plan

We have payment plans in place for the Professional Courses. If you are currently working within the thoroughbred industry you may qualify for a grant - get in touch for more info.

+353 (0) 897013884

info@equied.com

Equi-Ed

equied

equiededucation



equied.com

+353 (0) 897013884

info@equied.com

Equi-Ed

equieded

equiededucation



Copyright © Equi-Ed 2024

equied.com



10

COURSE PROSPECTUS

EQUINE & CANINE COURSES



PROFESSIONAL CAREER COURSES

OWNERS COURSES

CPD – FOR PROFESSIONALS

